



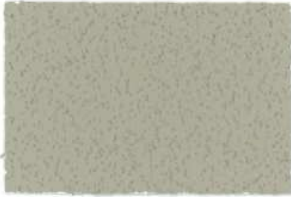
Integral Colors for Concrete



Spring Green
3.25 lbs./sack



Slate Green
3 lbs./sack



Sun Buff
1.20 lbs./sack



Sand Buff
2 lbs./sack



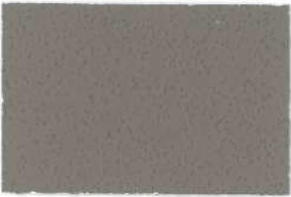
Service Tan
1 lb./sack



St. Thomas Tan
2 lbs./sack



Ochre Buff
5 lbs./sack



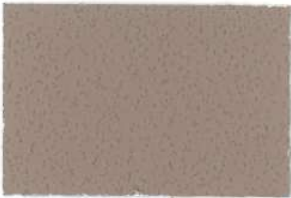
Earth Brown
2 lbs./sack



Pecan
1 lb./sack



Kona Brown
4 lbs./sack



Rustic
0.75 lbs./sack



Desert Rose
1.50 lbs./sack



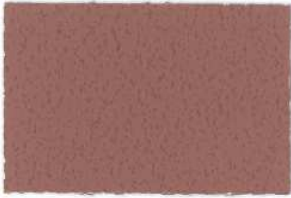
Chestnut Sand
3 lbs./sack



Aztec Gold
3 lbs./sack



Fired Clay
4 lbs./sack



Dakota Red
3 lbs./sack



Quarry Red
4 lbs./sack



Brick Red
4.50 lbs./sack



Paris Grey
1 lb./sack



Greystone
2.25 lbs./sack



Charcoal
5 lbs./sack



Black
7.50 lbs./sack

The colors represented above are to serve as a guide only. Variations may occur due to a wide range of variables, including but not limited to, the color of raw materials, quality and degree of workmanship, water content and curing time. The colors displayed are accurate to laboratory samples, of a 5-sack mix with 4 inch slump. If exactness of color is hypercritical, it is recommended that a job site test panel/slab is placed and finished.

Professional Use Only